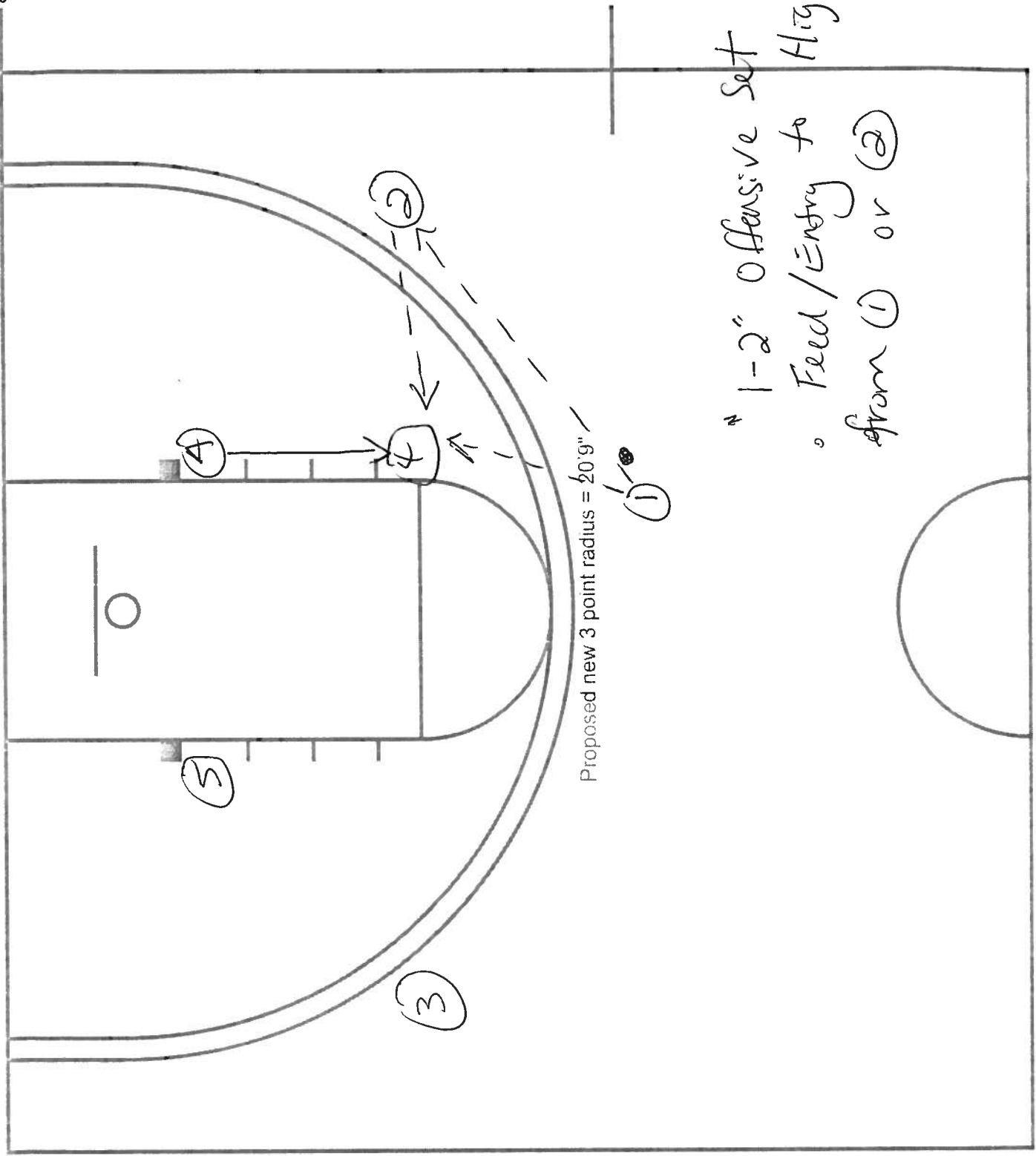
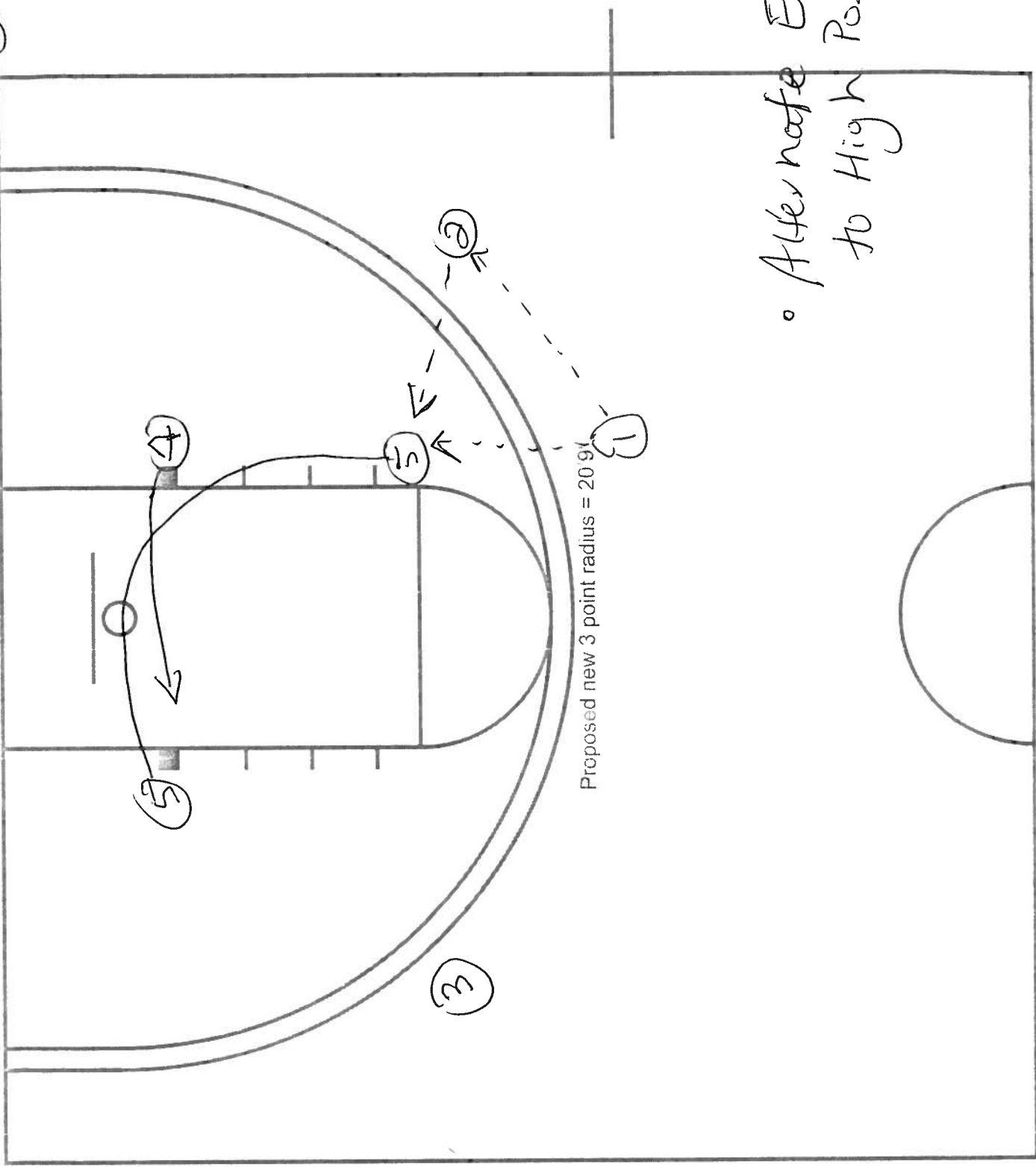


"1-2" OFFENSIVE SET

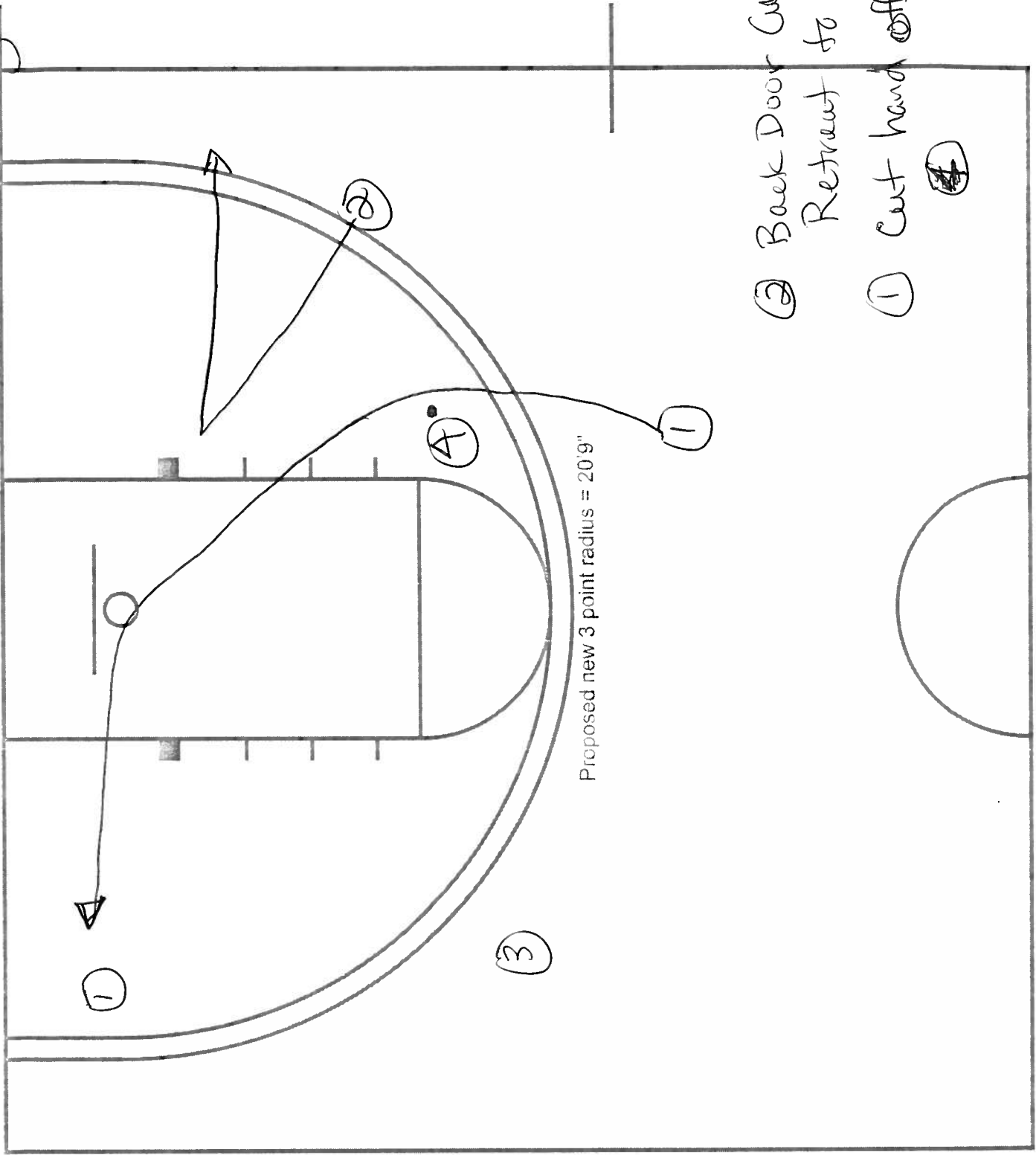
Page 1



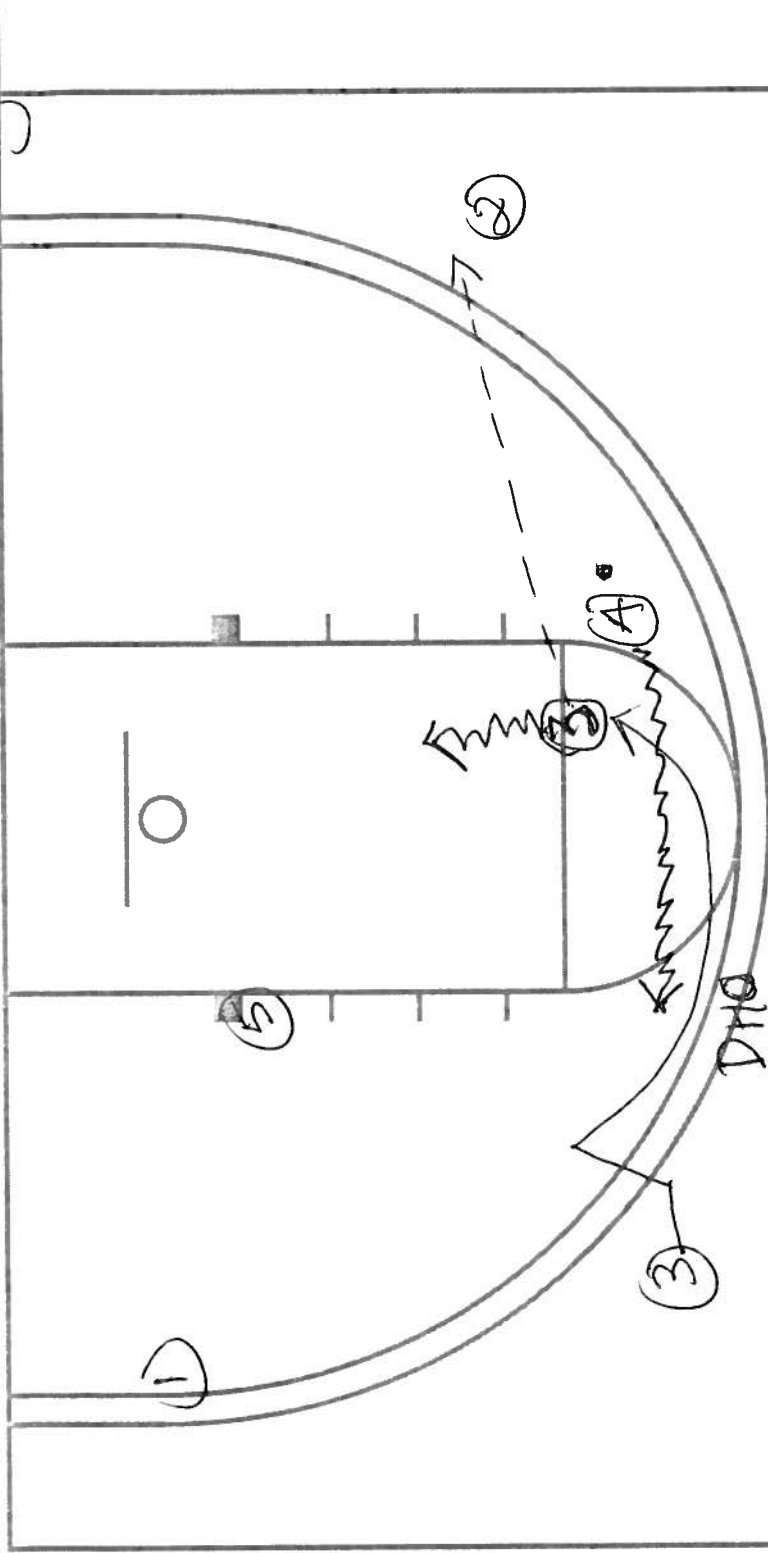
"1-2" Offensive Set
• Feed / Entry to High Post
from (1) or (2)



• Alternative Entry to High Post



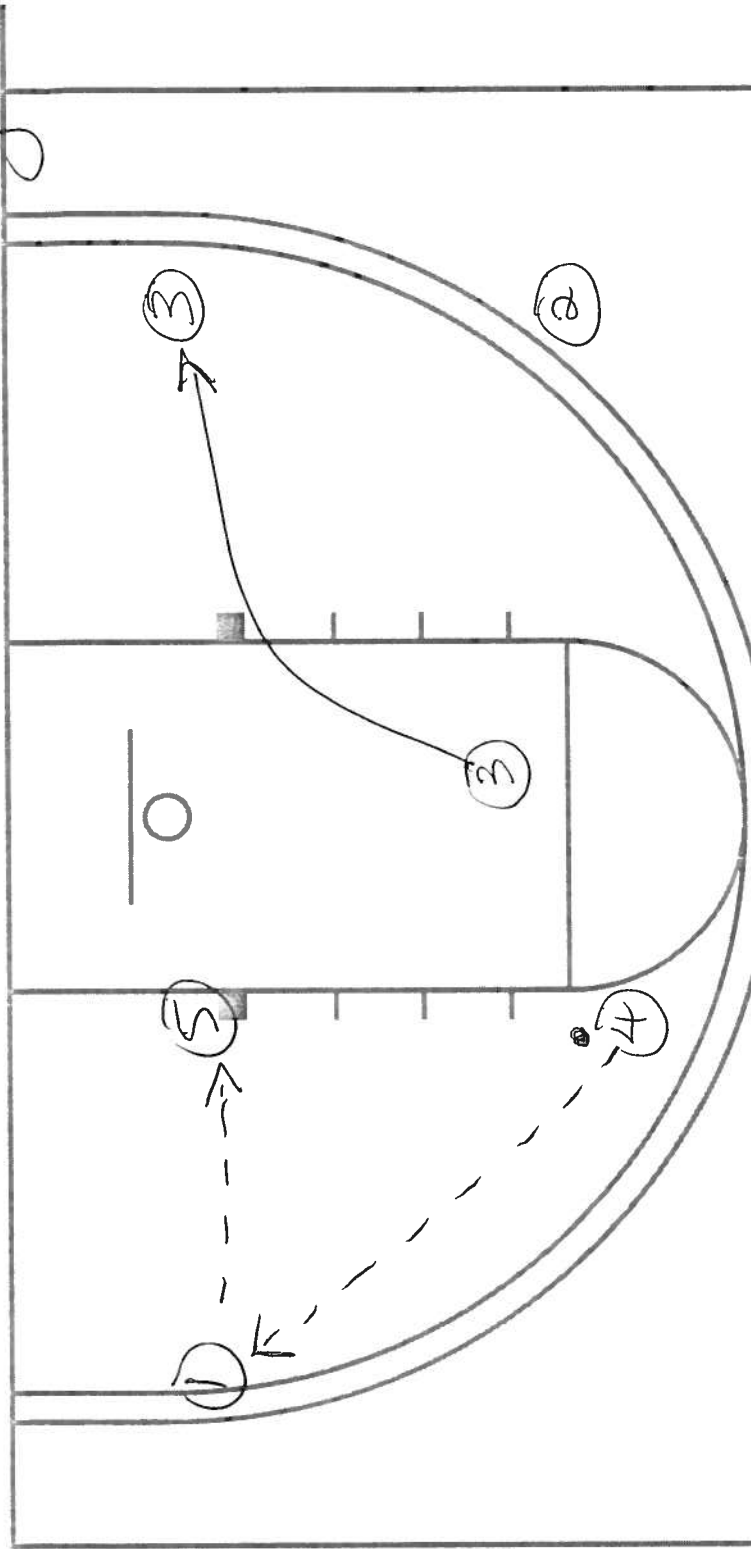
- ② Back Door Cut & Retreat to Corner
- ① Cut hand off from ~~front~~



Proposed new 3 point radius = 20'9"

Ⓐ dribble across top of the key towards Ⓝ for a DHO hand off (DHO)

Option 1 Ⓝ if receives ball drive to hoop OR pass to Ⓜ for shot by Ⓜ



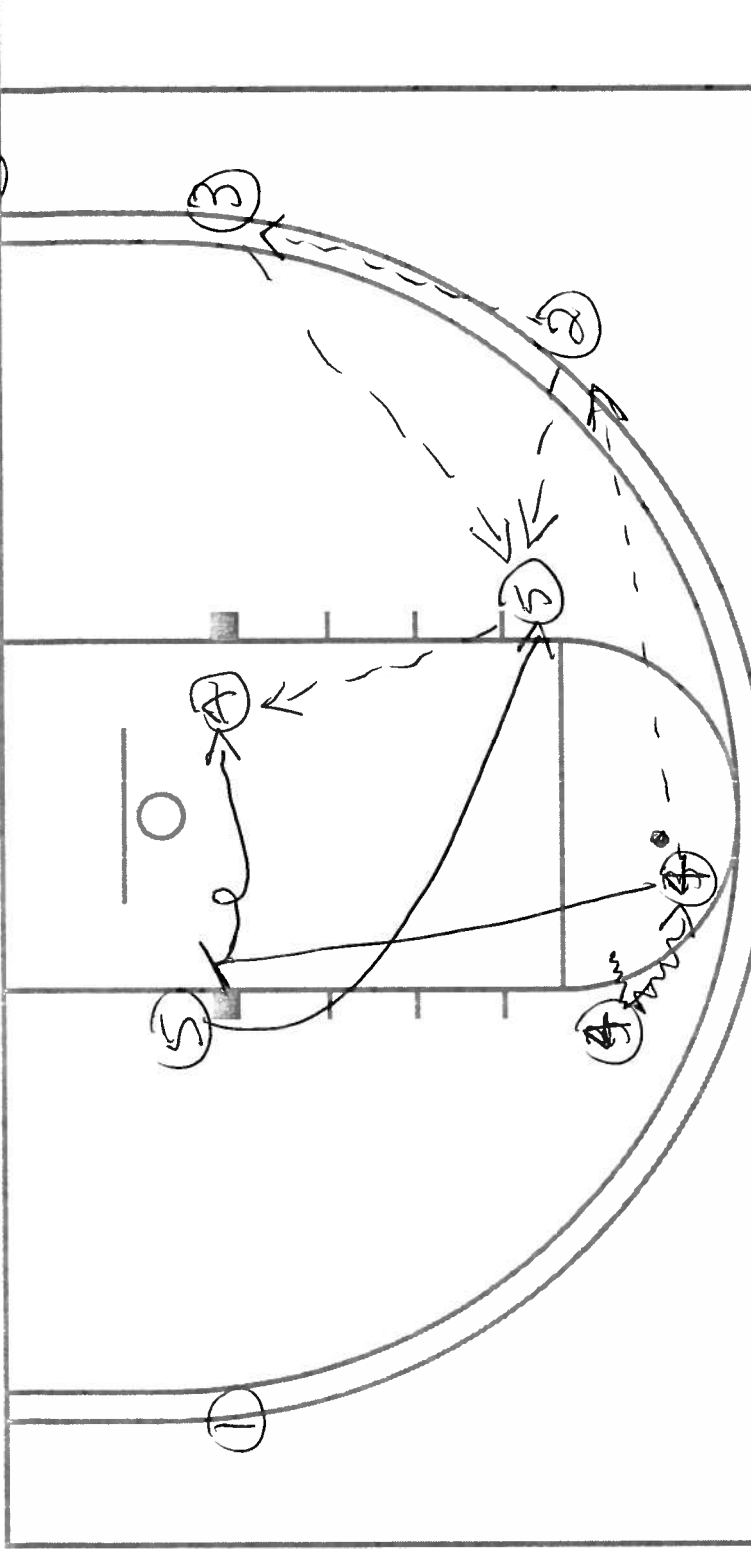
Proposed new 3 point radius = 20'9"

Option 2 No DHU to 3

- 3 continues to corner
- 4 passes to 1
- 1 feeds 5 at Low Post

OR

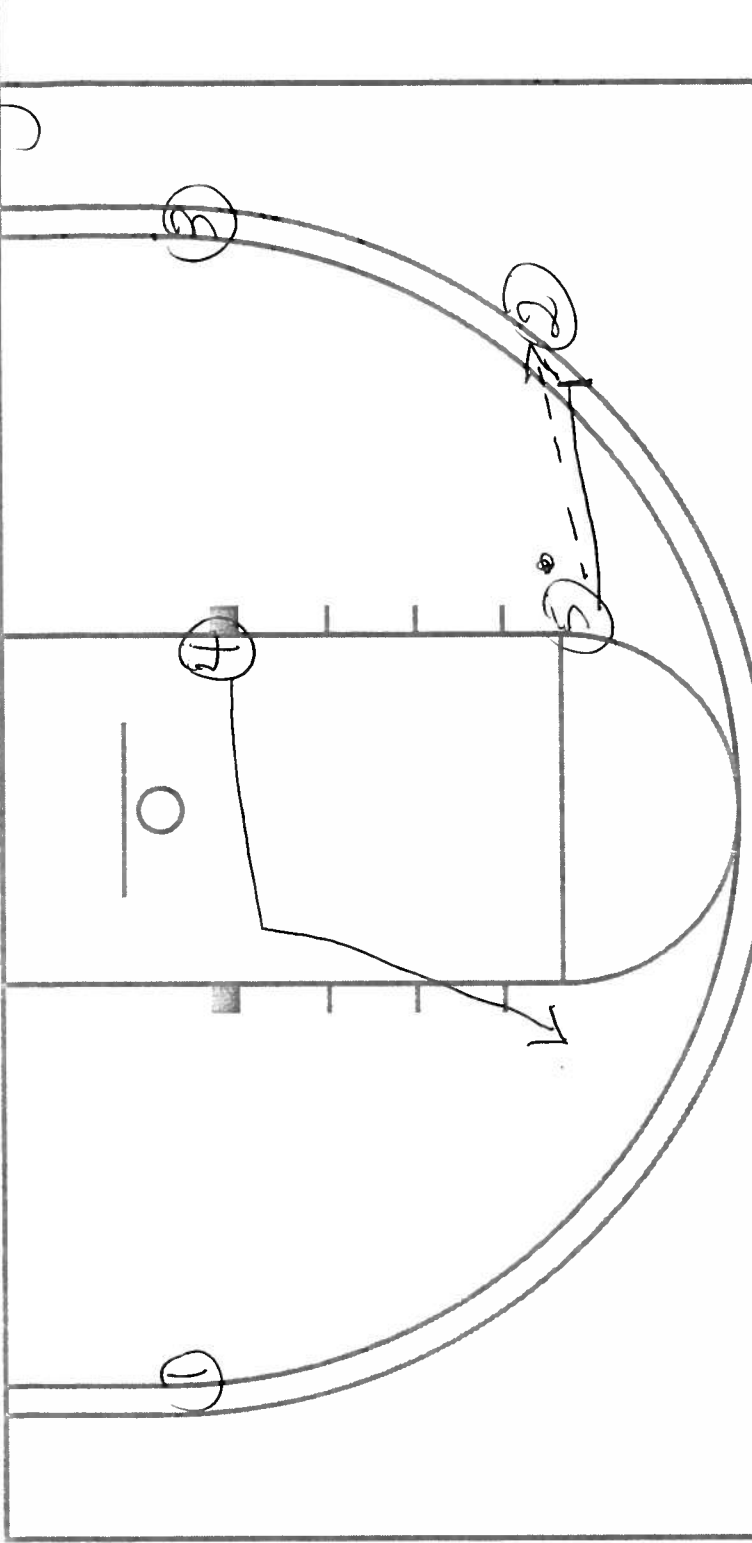
- 4 passes directly to 5
- on "Duck-In"



Proposed new 3 point radius = 20'9"

Option 3 Ball Reversal

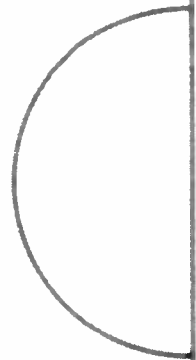
- (A) reverses the ball with pass to (2) and then (2) to (3)
- (A) then downscreens (5) for (5) cut to elbow
- ~~(5) screens~~ (3) or (2) pass to (5)
- (A) rolls and seals for hi/lo pass from (5)

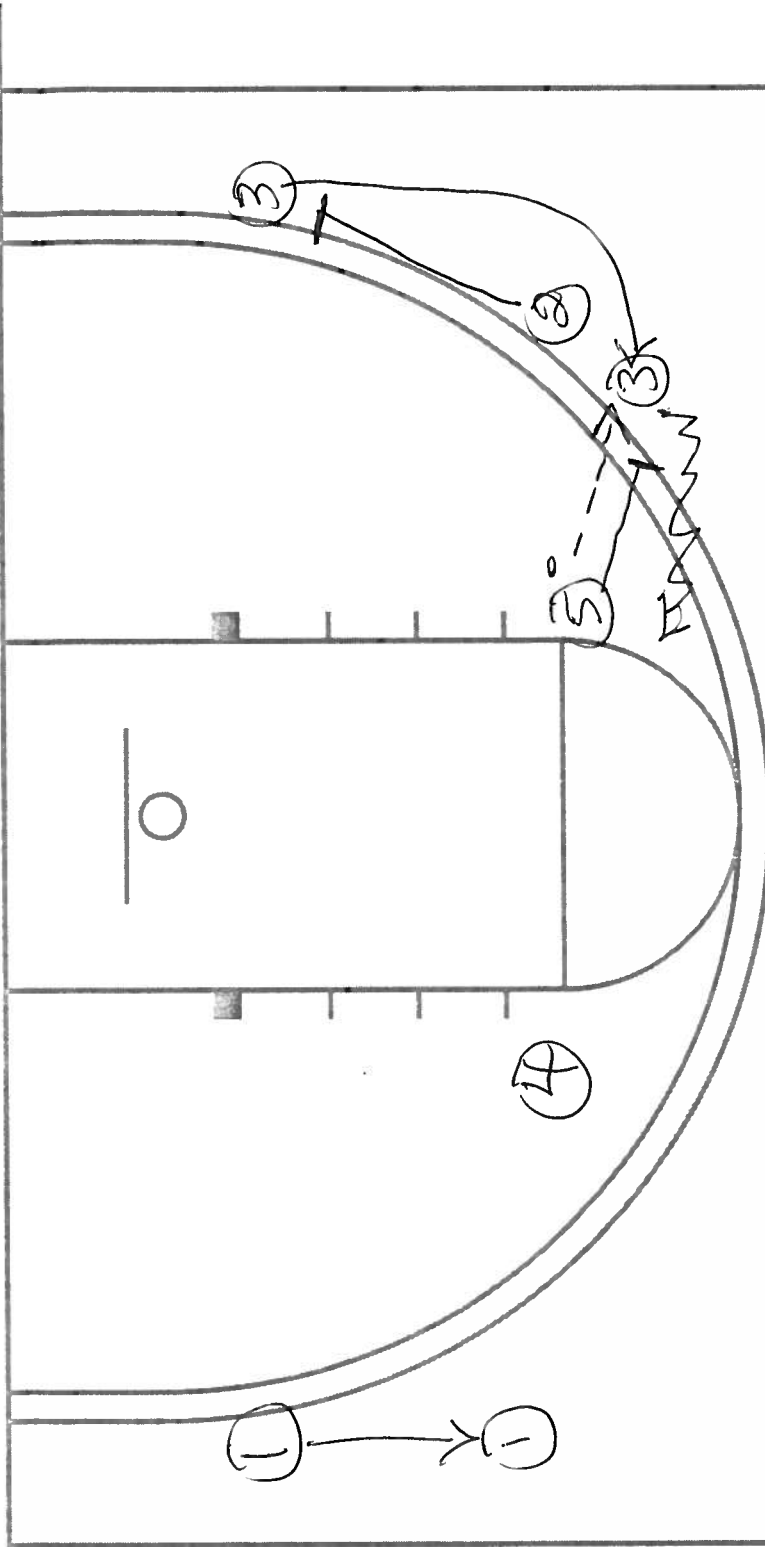


Proposed new 3 point radius = 20'9"

Option A If No Pass Available for ⑤

- ⑤ Pass back to ② and set ball screen on ②
- ④ must get to other side of the key and then to opposite elbow

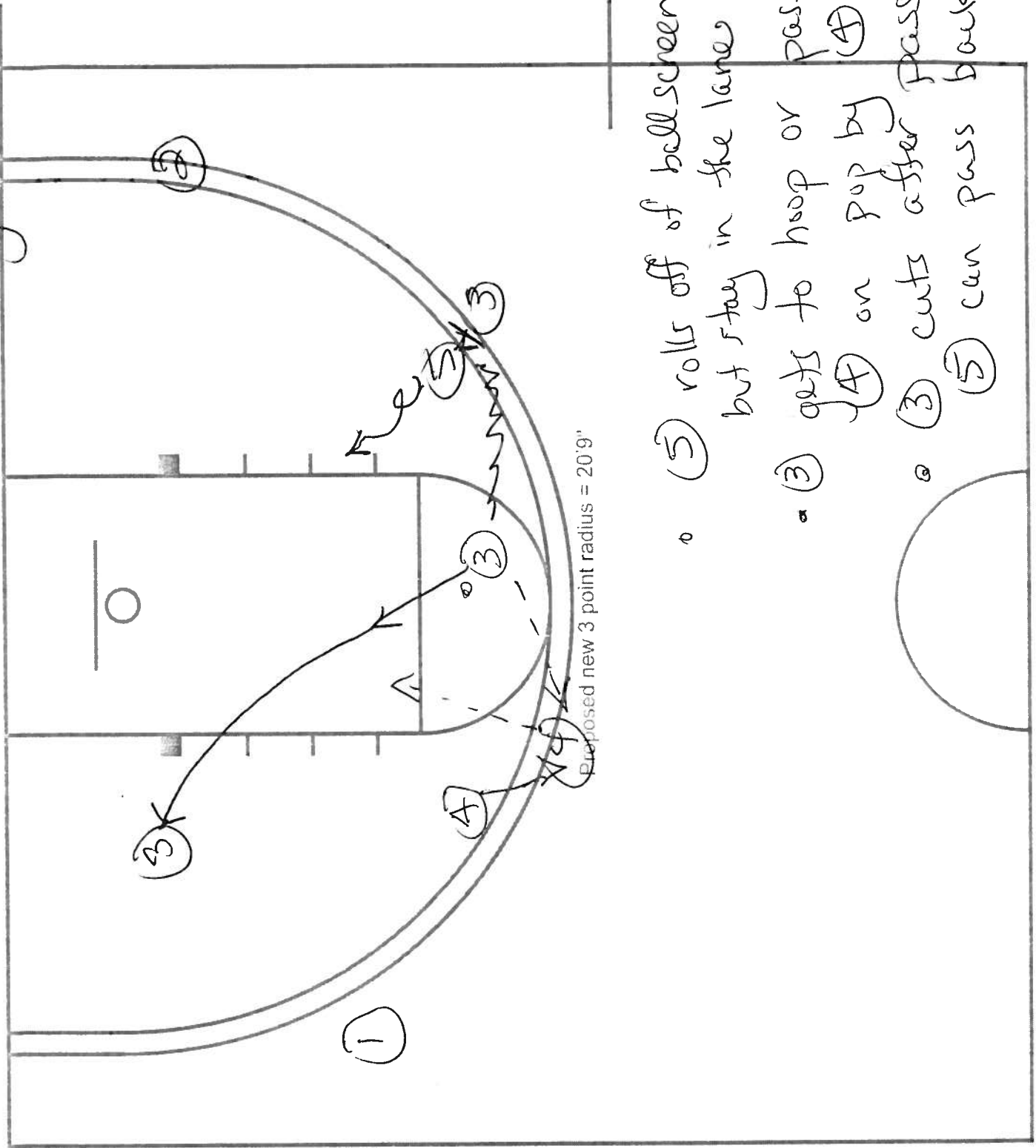




Proposed new 3 point radius = 20'9"

Option 4 Important Note

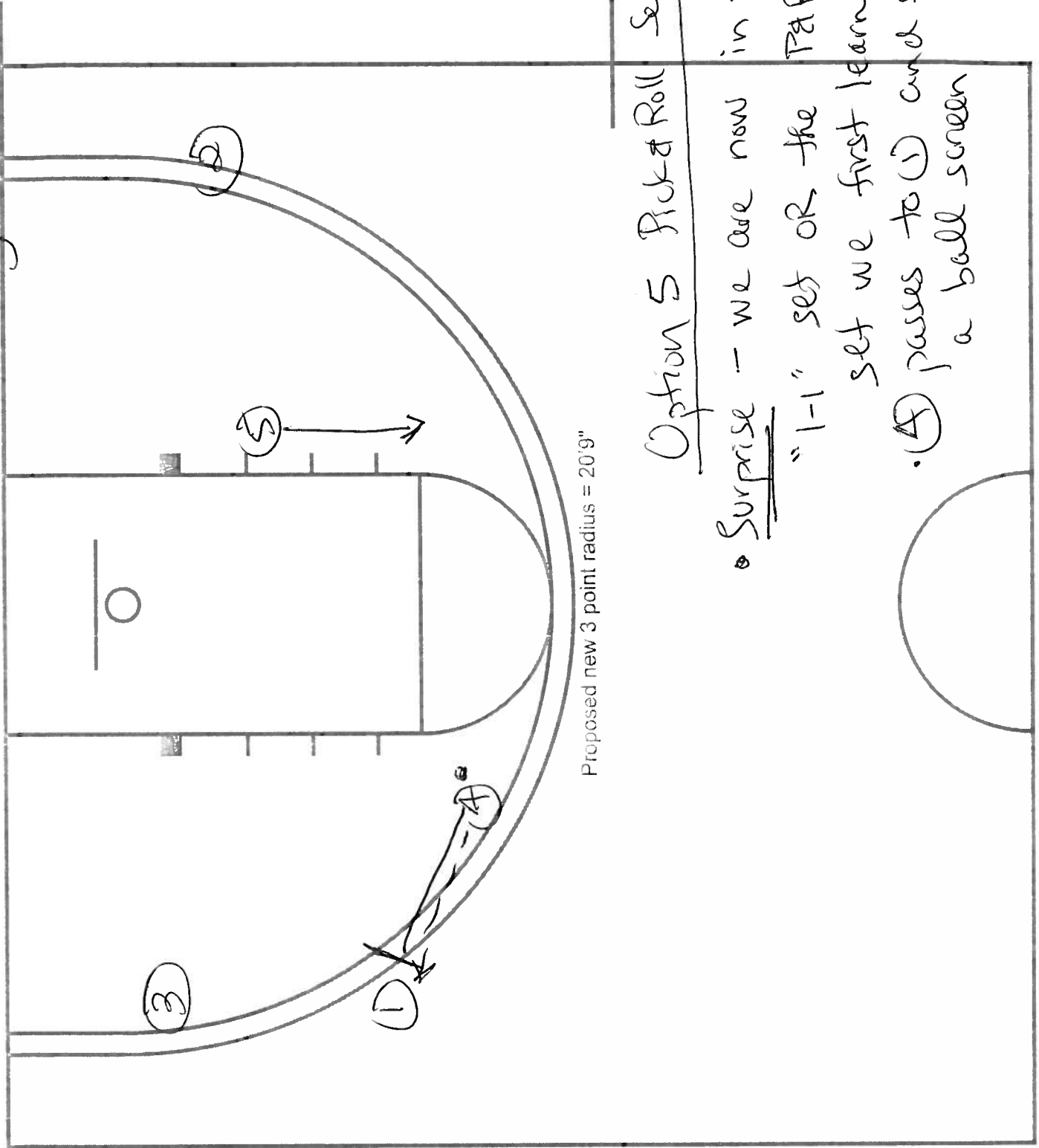
- When ⑤ has the ball at the elbow and wants to pass out ② and ③ may have to switch/screen ⑤ before pass from ⑤
- ⑤ when then ball screen ③



• (5) rolls off of ballscreen but stay in the lanes

• (3) gets to hoop or passes to (4) on pop by (4)

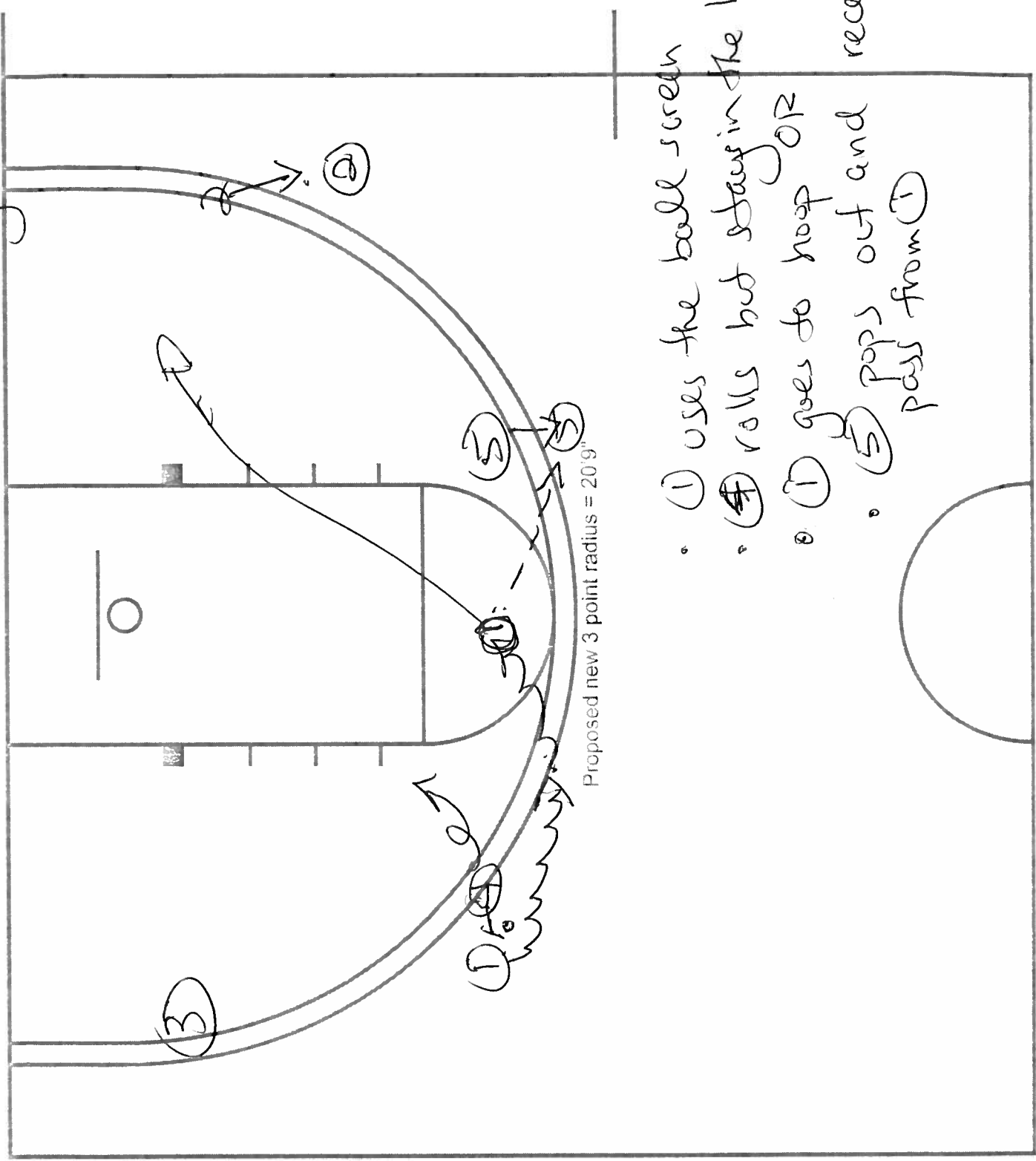
• (3) cuts after Pass and (5) can pass back



Proposed new 3 point radius = 20'9"

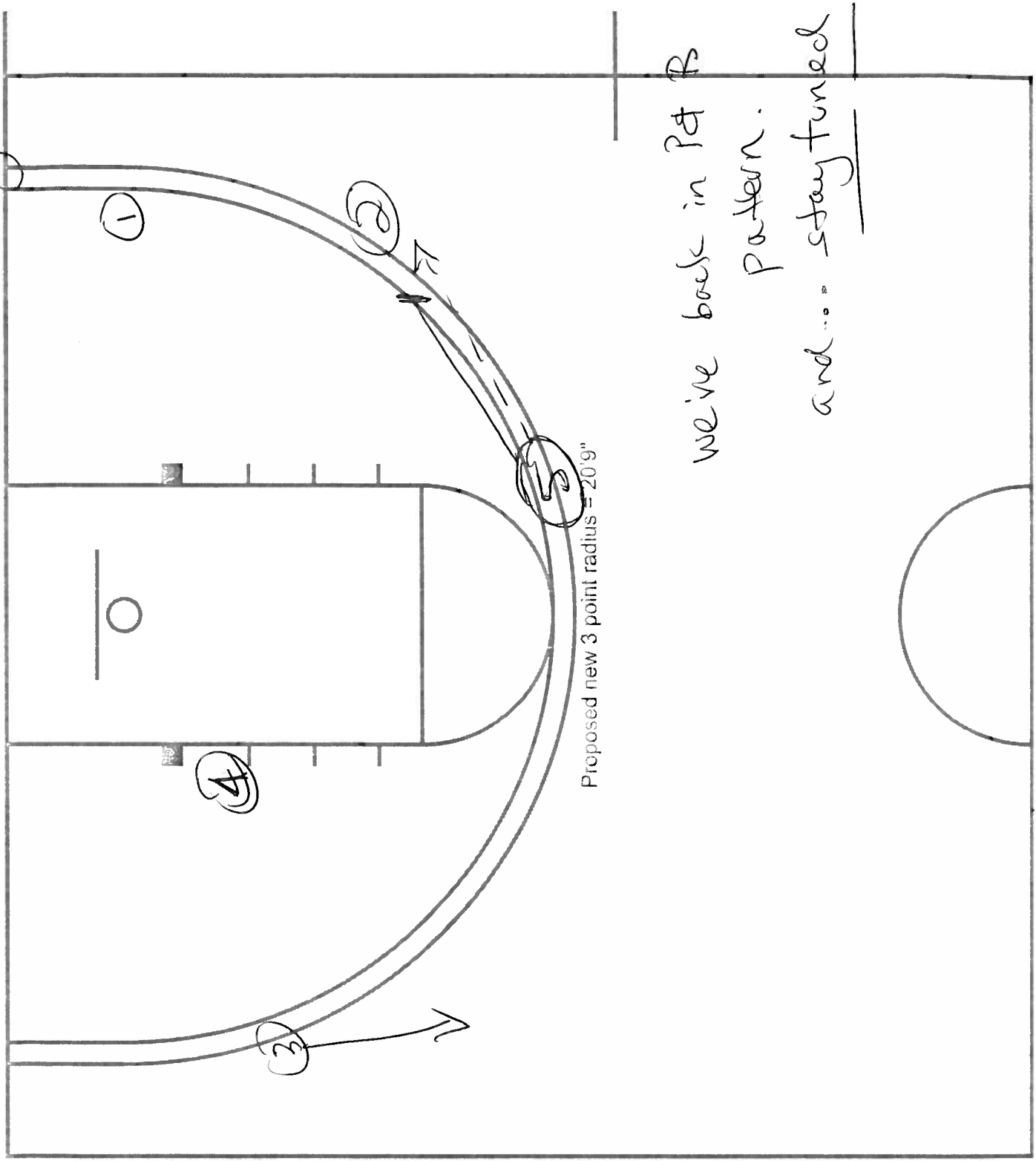
Option 5 Pick & Roll Set

- Surprise - we are now in the "1-1" set OR the PAR set we first learned
- (4) passes to (1) and sets a ball screen



- ① uses the ball screen
- ④ rolls but stays in the lane
- ① goes to hoop OR
- ⑤ pops out and receives pass from ①

Page 2



We've back in Pt B
Pattern.

and... stay tuned